



Roxtec SRC r20 GRP doorvoer

Doorvoer met een glasvezelversterkt polyester frame

De Roxtec SRC r20 GRP is een kabeldoorvoer met afgeronde hoeken om mechanische belasting te verminderen en barsten te voorkomen. Het frame wordt in de constructie gelamineerd en geconfigureerd met Roxtec RM modules die kunnen worden aangepast aan kabels met verschillende diameters. De afdichting kan ook worden geconfigureerd als een lege doorvoer die reservecapaciteit biedt voor de toekomst.



- Lichtgewicht
- Eenvoudig te onderhouden en inspecteren

Producteigenschappen



Brandvertragend



Waterdicht



Gasdicht

Installatiestructuur



Composiet

Montagetype



Laminering

Specificaties en certificaten

Brand

- A-KLASSE volgens IMO 2010 FTP-code

Dichtheid

- Gas: 1 bar (calamiteitendruk)
- Water: 2 bar (calamiteitendruk)

Afmetingen frame

mm/kg

De onderstaande frame-uitvoeringen zijn een beperkte selectie. Ga naar [roxtec.com](https://www.roxtec.com) voor het volledige assortiment frames en configuraties.

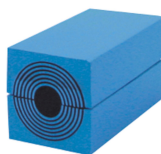
| Titel | Frame-openingen | Vrije doorvoerruimte | Buitenafmetingen WxHxD | Afmetingen opening w x h | Gewicht | Art. nr. |
|-----------------|-----------------|----------------------|------------------------|--------------------------|---------|----------|
| SRC 4x1 R20 GRP | 1 | 120 x 120 | 150.5 x 189.5 x 60 | 156(+3/-3) x 195(+3/-3) | 0,9 | 198826 |
| SRC 6x1 R20 GRP | 1 | 120 x 180 | 150.5 x 248 x 60 | 156(+3/-3) x 254(+3/-3) | 1 | 198827 |

Gegevens van afdichtcomponenten

Afdichtcomponenten



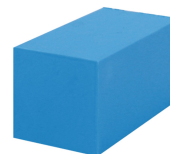
vetstick



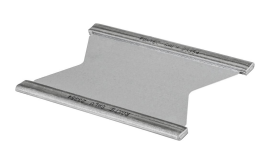
RM module met Multidiameter™



Wedge en Wedgekit



Massieve RM compensatiemodule



fixeerplaat

Ga naar [roxtec.com](https://www.roxtec.com) voor uitgebreide informatie.



The product information provided by Roxtec does not release the purchaser of the Roxtec system, or part thereof, from the obligation to independently determine the suitability of the products for the intended process, installation and/or use.

Roxtec gives no guarantee for the Roxtec system or any part thereof and assumes no liability for any loss or damage whatsoever, whether direct, indirect, consequential, loss of profit or otherwise, occurred or caused by the Roxtec systems or installations containing components not manufactured by an authorized manufacturer and/or occurred or caused by the use of the Roxtec system in a manner or for an application other than for which the Roxtec system was designed or intended.

Roxtec expressly excludes any implied warranties of merchantability and fitness for a particular purpose and all other express or implied representations and warranties provided by statute or common law. User determines suitability of the Roxtec system for intended use and assumes all risk and liability in connection therewith. In no event shall Roxtec be liable for indirect, consequential, punitive, special, exemplary or incidental damages or losses.

The Roxtec products are offered and sold in accordance with the conditions of the Roxtec General Terms of Sales. The latest version of the Roxtec General Terms of Sales can be downloaded from <https://www.roxtec.com/en/about-us/about-roxtec/general-terms-of-sales/>

We reserve the right to make changes to the product and technical information without further notice. Any errors in print or entry are no claims for indemnity. The content of this publication is the property of Roxtec International AB and is protected by copyright.

This document was generated on: 2024-04-25